

A46JE / A46JRT

ARTICULATED BOOM LIFTS



- Class leading articulated boom lifts
- Choose from electric or rough terrain diesel models
- Highly maneuverable with tight turning radius
- Superb working envelope with zero tailswing
- Robust, reliable and easy to operate



snorkel[™]
www.snorkellifts.com

ARTICULATED BOOM LIFTS

A46JE / A46JRT

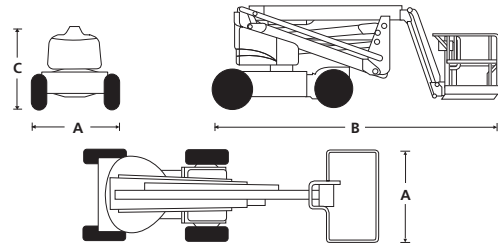
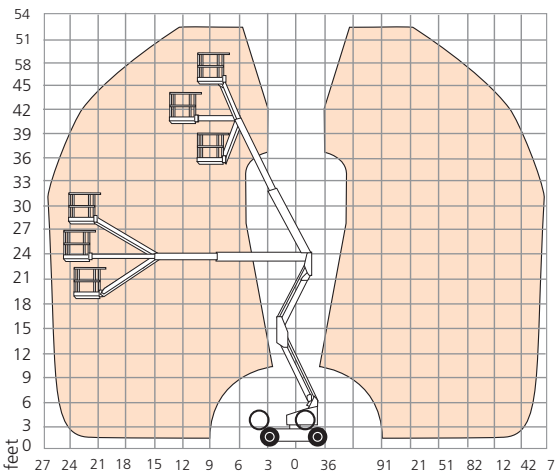
| DIMENSIONS | A46JE | A46JRT |
|-----------------------------------|---------------|---------------|
| Max. working height | 52 ft 3 in | 52 ft 11 in |
| Max. platform height | 46 ft 3 in | 46 ft 11 in |
| Max. horizontal reach | 24 ft 11 in | 24 ft 11 in |
| Clearance height at max. outreach | 24 ft 6 in | 25 ft 2 in |
| Platform size | 39 in x 72 in | 39 in x 72 in |
| Chassis width (A) | 5 ft 8 in | 6 ft 10 in |
| Overall length (B) | 18 ft 4 in | 18 ft 8 in |
| Stowed height (C) | 6 ft 7 in | 7 ft 2 in |
| Ground clearance | 6 in | 13 in |

| PERFORMANCE | A46JE | A46JRT |
|-----------------------------|--|-------------------------------|
| Platform capacity (SWL) | 500 lbs | 500 lbs |
| Max. wind speed | 28 mph | 28 mph |
| Max. drive height | 46 ft 3 in | 46 ft 11 in |
| Max. drive speed (stowed) | 3.2 mph | 4.25 mph |
| Max. drive speed (elevated) | 0.5 mph | 0.8 mph |
| Jib length | 5 ft | 5 ft |
| Jib arc | 140° | 140° |
| Platform rotation | 160° | 160° |
| Superstructure rotation | 360° non-continuous | 360° non-continuous |
| Tailswing | 0 in | 0 in |
| Raise/lower time | 99/92 sec | 101/98 sec |
| Gradeability | 30% | 45% |
| Inside turning radius | 2 ft | 2 ft 8 in |
| Outside turning radius | 9 ft 10 in | 10 ft 5 in |
| Tires | non marking, foam filled IN240/55D 17.5 | foam filled lug 355/55D625 |
| Controls | proportional | proportional |
| Drive system | 2-wheel drive | 4-wheel drive |

| POWER | A46JE | A46JRT |
|-----------------|-------------------------|--|
| Power source | 8 x 6V, 360Ah batteries | Kubota V1505 24.9hp diesel Tier 4 Final |
| Battery charger | 100-200V/15A | n/a |

| WEIGHT | A46JE | A46JRT |
|--------|------------|------------|
| Weight | 14,690 lbs | 16,620 lbs |

WORKING ENVELOPE



STANDARD FEATURES

- Snorkel Guard™ secondary guarding system
- Multi-functional proportional controls
- Zero tailswing
- Oscillating front axle (A46RT only)
- Tri-entry platform
- Foam filled lug tires (A46JRT only)
- Non-marking tires (A46JE only)
- Power line to platform
- Hour meter & on-board diagnostics display
- Tilt alarm
- Horn
- Battery charge indicator (A46JE only)
- Drive motion alarm
- Flashing amber light
- Platform overload system
- 2 year parts & labor, 5 year structural warranty
- ANSI compliant

OPTIONS

- Special paint colors
- Airline to platform
- Non-marking tires (A46JRT only)
- Pneumatic tires (A46JRT only)
- 5' aluminum platform with swing gate
- AC generator 110V/2.5kW (A46JRT)
- Dual fuel (A46JRT)
- Aircraft package
- Deluxe aircraft package
- Cold weather package
- Extreme cold weather package (A46JRT only)
- Extreme environmental package
- Light package
- Utility package (A46JRT)
- Glazier package (A46JRT)
- Environmental hydraulic oil
- Tool tray (A46JRT)
- Pipe rack
- Personal fall arrest system (A46JRT)

snorkel

www.snorkellifts.com

P.O. Box 1160
St. Joseph, MO 64502-1160, USA
Tel: 1 (785) 989-3000
Toll-Free: 1 (800) 255-0317
Sales Fax: 1 (785) 989-3070
Parts Fax: 1 (785) 989-3077